



FRIENDS OF CRESCENT GARDEN



## *SPRING NEWSLETTER 2012*

### DATES FOR YOUR DIARIES:

**Plant Sale** Saturday 19<sup>th</sup> May 10am -12am & Sunday 20<sup>th</sup> 2- 4pm May

**Friends' Garden Party\*\*** Saturday 16<sup>th</sup> June, from 6 to 8pm.

**Friend's Autumn Visit\*\*** Thursday the 20<sup>th</sup> September

**Friends' Coffee Morning** Saturday 1<sup>st</sup> December, the Parish Centre, 10-30 to 12-30.

**Our Next AGM** Saturday 3<sup>rd</sup> March 2013, the Parish Centre at 2.30.

\*\* Booking Forms for both events are included with this Newsletter.  
If you didn't receive a form and would like one, please contact the Secretary.

### COVER, Spring 2012

*The front cover* Shows the very latest news on the Friends' Diamond Jubilee project. Remember the back cover of the Autumn Newsletter? It showed this area, somewhat overgrown and unresolved, looking east.

After eighteen months of planning, research and discussion by the Committee's small design team, led by Curator Gilly Jaynes, excellent fundraising efforts last year enabled the commissioning of two more Plant Supports from local artist/blacksmith Peter Clutterbuck. Of the same Reptonian design as the four he made for us in 1992/3, these are 3 ft higher, to support taller climbing plants.

And here they are - just installed (and well cemented in!) by GBC contractor Cliff Philips.

This picture looks westwards, displaying both the elegant new supports, which now mark the east/west boundaries of the Diamond Jubilee part of Crescent Garden.

*The back cover* Ongoing plans have been displayed for the Friends' consideration, initially at last year's Coffee Morning, and then in greater detail at this year's AGM, where the display board attracted much attention and discussion.

(Available since then for inspection, it will be shown to this year's Britain in Bloom judges in due course, to explain the work continuing to progress in this part of Crescent Garden.)

Accessed only from Terrace Walk, it is hoped the Diamond Jubilee area will be a delightful discovery for visitors as they walk through Crescent Garden.

Work can now begin to create an informal haven of delightful flowers, planted naturally in a semi-woodland setting. An ongoing source of pleasure to gardeners and non-gardeners alike, it will complete and enhance the Friends' original purpose: to restore and recreate, as nearly as possible, the Regency Ornamental Garden designed to complement the Crescent in the early 19<sup>th</sup> Century. *Wendy Osborne*

### **REPORT ON THE FRIENDS' 19<sup>th</sup> AGM, 26<sup>th</sup> February 2012**

*(The following is a brief synopsis of the salient points of the Meeting; members wishing to see the Minutes should contact Hon. Secretary [davidmerit1@virginmedia.com](mailto:davidmerit1@virginmedia.com))*

It was a fine sunny day, and there was a cheerful buzz, as around 120 Friends and guests assembled in the Parish Centre.

Chairman Don Cripps warmly welcomed everyone, especially our guests, His Worshipful the Mayor Cllr. Chris Carter, with his wife Julia, and both the Anglesey Ward Councillors with their ladies.

Minutes of the previous AGM accepted, the meeting moved to -

#### **The Chairman's Report** - Don Cripps

*Don began by observing that this would be his 6<sup>th</sup> and final report as Chairman. Pam Mawby had kindly consented to be a candidate to succeed him.*

- 'As already reported in the Autumn Newsletter, Crescent Garden had a splendid year, with a 7<sup>th</sup> Green Flag Award for excellence in public open spaces. It won 3 prizes in Southern South East Britain in Bloom, with top marks across the region in the Small Parks category.  
2011 was also the 13<sup>th</sup> consecutive year Crescent Garden featured in the National Gardens Scheme Yellow Book, of gardens worth visiting countrywide.
- Curator Gilly Jaynes and the Friends' Volunteer gardeners were warmly congratulated for their consistent hard work, in all weathers.
- Two outings were well supported: to Keukenhof Gardens and to Oxford's Botanic Garden. Accounts of both visits were given in the Autumn Newsletter, and very many thanks were owed to organizers Pam Dimmock and Enid Billington.
- The Garden Party: after a damp start, generous glasses of Pimms and the usual superb food helped everyone to enjoy it! Don thanked everyone who worked so hard to organize this major event.
- Fund-raising events had been well supported: the two-day plant sale was very successful and is to be repeated this year.

- The 4 Heritage Open Days in September attracted 120 visitors to the garden - up 50% from 2010.
- The Coffee Morning in early December hit a record and attracted several new members.
- Friends also gave community support, with their annual Party for the Children of Chernobyl, and by sponsoring a tree at St. Mary's Christmas Tree Festival.
- In conclusion, a busy and productive year - which saw our close working relationship with the Council at all levels maintained and strengthened.'

*Don ended his last Report with his personal thanks to the Friends and their Committee for the unstinting support he had received throughout his Chairmanship.*

**Treasurer's Report** - David Wardle

*(A financial statement was on every seat, with the Agenda, and can be seen on request by Friends unable to attend).*

- '2011 was a good year for the Garden in financial terms, also. At the bottom line of the financial report was a surplus of £1352 as opposed to £80.71 in 2010.  
Money carried forward to 2012: £9166.93.

These figures resulted from increase in income and a lower expenditure.

- Increased slightly: income from the Garden Party and the two outings.
- A greater increase was the result of a larger number of visitors for the Heritage Open Days; and an outstandingly successful Coffee Morning, which made £1000 (almost double the usual £5-600.) Sales of our new Christmas cards and popular notelets were very good too, at both these events.
- Expenditure reduction: there was only a modest outlay on plants this year - and no repairs were necessary for the fountain.
- ALL GOOD NEWS – and this year's excellent fundraising would help to offset the major planned expenditure for 2012 on the Diamond Jubilee Project.
- A note of caution however!! Costs of the trainee gardener from the WRAG's organisation will rise in 2012. We will therefore need to maintain a higher income level, and also to retain the grant from Gosport Borough Council to subsidise our Training programme. This helps us to maintain Green Flag standards, and the national recognition received for this small Gosport park.



- The overall financial picture is reasonably good; if more new members are attracted, there should be no immediate need to increase subscriptions in the foreseeable future.'

There being no questions, the accounts, very kindly audited by Ian Gallett for the Friends, were accepted by the meeting.

### **The Curator's Report** - Gilly Jaynes

Gilly gave a delightful presentation, illustrated by a slide show which lent colour and humour to her account of the Garden during the last 12 months. It was hugely enjoyed by everyone present – if you weren't there, you missed a treat! Here is her amusing account of the Garden's year; though we can't relay the drift of lovely pictures that gave such life and colour to what she said:

'It's been a very busy and fulfilling year since I last saw you! The volunteer gardeners have been out in force, and we have worked with our colleagues from the Council: David Stubington, Caroline Smith, Sian Jones; Cliff Philips Tree surgeon, Adrian Kensitt of South Coast Tree Surgeons, and Caroline's Greenteam, run by Darren, who keep the lawns looking lovely, and remove the brash every week.

This year I am pleased to report there has been no vandalism, and on the whole our countless visitors have respected the site and behaved responsibly. Everyone seemed to enjoy numerous activities held in the garden, and the Friends' have admirably supported all the fundraisers and charity events.

During the winter gales we lost a large bay tree; it fell across Terrace Walk (luckily during the night) and sadly damaged the Cornus Florida growing immediately in front of it. This little tree has been carefully pruned and we'll watch its progress.

Our little badger continues to dig up the lawns when food is scarce. The robins who live along Terrace Walk keep us company whenever we are digging or turning the compost – they relish the opportunity of fast food! A colony of slow worms has been living in the compost this year, too.

Last Summer I saw an amazing sight, with Clare, (our Horticultural Student from the Women's Farm and Garden Association).

We were alerted by a noise like several fast-revving motorbikes, whizzing along Terrace Walk. Then we saw a large swarm of bees, rising out of the ground. First they flew into a Bay tree, then they zoomed low across the garden, over the railings, to the Crescent - where they rose straight up and into Bill and Rita's bedroom window - NO, that's not true - I made that bit up for dramatic effect! - they soared over the rooftop, and were gone.

It takes a lot of man and woman hours to keep any garden looking really good. When the garden in question's a public space, never closed, and must always look its best, a lot of thought has to go into prioritising the work. We're really fortunate to have so many happy volunteer gardeners. Our present weekly volunteer work time amounts to around 70 hours, which is wonderful.

Earlier in the year, a team of us pruned the roses. (*There are well over 100!*) They made a wonderful display last Summer. Partly due to the Amazing Compost we're making, as well as the leaf mould - but more about Compost, later. We also pruned many of the shrubs during the dormant period of the winter; and it's then that the Council's contractors need to reduce the ever-surging height of the Bay trees.

I'm hoping to increase our display of early Spring flowers and bulbs; last year more English bluebells were introduced, whilst we try to eradicate those invasive Spanish ones. We've had a good display of snowdrops, thanks to careful splitting and replanting while still in the green by Clare.

As the tulips fade, the Forget-me-nots get very thuggish and have to go. Before you know it, we're racing against time to catch up with supporting perennials, *before* they grow tall and fall flat on their faces when the wind blows. With roses blooming, and Summer in full abundance, dead-heading is a priority, it persuades the roses to stay with us for weeks longer. Derby Day is traditional pruning time for the box hedge. But if we waited until then we would never get the job done – it's 200 yards long! So Bill and his team got cracking in mid-May; and the Box hedge looked perfect for the Garden Party.

Gradually, late summer flowers flowered, then drifts of little pink cyclamen. Delicious mulberries grew darker as they ripened... Later still, the leaves were turning gold. In the twinkling of an eye they were scattered; to be raked up and stored to make splendid Compost for the roses (more about Compost, later!) And so the garden shut down, for a well-earned winter sleep.

This year the Plant Sale weekend was a wonderful event, and we served home-made teas as well, thanks to the Friends, their marvellous support, their cooking and their lovely plants!

During all these social events the judges came and went, for the RHS and SE Britain in Bloom, the Green Flag, and (unheralded, as always) for the NGS Yellow Book.

Big news - this year, amazingly, Gosport has made it through to the **National** Royal Horticultural Society's Britain in Bloom competition!

One of only 73 towns to be selected from more than 1,000 entries, Gosport will be judged in the small city category, alongside Loughborough, Crawley, Taunton and



Harrogate. Judges from the Society will score the town on its horticultural achievement, community participation and environmental responsibility

They'll be looking at Gosport's parks and open spaces as well as the town centre and conservation areas, and a lot more besides. The Friends' Volunteers are on their mettle!

At the Heritage Open Days in September we gave guided tours of Crescent Garden to the public over a 4-day period. Regency ladies and gentlemen strolled around the grounds. All the tours were booked. Our stall selling cards, preserves and plants did a roaring trade.

Would you like to help with the event this year? If you think it might be fun – and it was! – contact a Committee Member, we'll be delighted to tell you what's involved.

Finally, I want to salute the volunteer gardeners - Bill, Christine, Clare, Cynthia, David, David, Gilly, Ginny, Janet, Julian, Kate, Lesley, Lyn, Marilyn, Maggie, Rita, Pam, Ronnie, Rosemary, Sarah, Sarah, Sylvia, Thelma, Wendy - and Wendy! – who all make this small space into such a unique and amazing place.

Though of course the *real* reason we volunteer every Wednesday is Julian's delicious coffee.....

Did I mention COMPOST??... It's truly dear to my heart!

A seriously important event in our calendar was the Grand Opening of the New Compost Bins. Over months, Dave Palmer rebuilt them all, begging and borrowing all the materials so that everything's been recycled.

So we could direct leaves to the right bin, Dave decided to name all 7 of them. So, we have "Bin Rita", "Bin Pam" – there's a "Rosemary" bin as well - you get the idea.

For October's Grand Opening Ceremony Julian was invited to cut the ribbon - the "Julian" bin being the biggest, we thought it appropriate for him to do the honours. Julian's seen many commissioning ceremonies in his time, but for some reason had never imagined officially declaring a compost bin Open. We heard muttered rehearsals beforehand - "God bless this Bin; And all who - what? – Dig in it???"

As at all Grand Openings, *extremely* smart hats were worn, there was Cake, and - of course - Champagne. Passers-by must have been deeply suspicious of the sound of so much laughter in the bushes, at eleven in the morning.

**Our big project for 2012** is the long-planned Diamond Jubilee Garden. Our special fundraising will all be put to good use in marking this historic occasion!

Updated plans are set out in detail on Wendy's information Board and we'll both be available to answer any queries on the project while we're all having tea."

Gilly thanked her audience for their support and attention, and was given appreciative and enthusiastic applause.

**Footnote:** The display board Gilly referred to showed the following information concerning the Diamond Jubilee garden, too small to read on the back cover!

*It was decided at the outset that this special area, sited in the hitherto unresolved space between the central fountain area and Terrace Walk, should be essentially part of the overall design of Crescent Garden; carefully chosen plants would give it a distinctive character.*

*To avoid through-traffic, access would be only from Terrace Walk, and each end would be bounded by an **iron plant support** – matching the four existing supports, but 3 feet taller, to support larger climbers.*

*Clearing and cultivation of the new space has opened it out to sunlight and rain. It has also opened it visually from Terrace Walk, so that the 'special area' can be seen as an integral part of the overall layout of the restored Crescent Garden that was approved by the Garden History Society and the Hampshire Gardens' Trust in 1992.*

(Friends who would like to see the board may do so, on application to Gilly Jaynes or Wendy Osborne).

**Election of Committee** This formally conducted, your Committee Members are now as follows:

Pam Mawby - *Chairman*  
David Merritt - *Hon. Secretary*  
David Wardle - *Hon. Treasurer*  
Gilly Jaynes – *Curator*  
Ginny Whelan - *Membership Secretary*  
Rita Rundle - *Member*  
Pam Dimmock - *Member*  
Enid Billington - *Member*  
Pam Jackson – *Member*  
Rosemary Harrison – *Member*  
Wendy Osborne (*ex officio*) - *artwork and research.*

**Presentation to Jill Parry**

Jill has been a mainstay of the Friends Garden Party catering team ever since joining the Friends' original Committee and becoming their first Treasurer, in 1992. After retiring from the Committee, Jill continued to work for the Garden Party behind the scenes.

Don spoke for everyone in appreciation of her two decades of sterling service:  
*"As Napoleon declared, an Army marches on its stomach, but we all know good food encourages friendship as well as fighting spirit!*

*I would like to thank Jill on behalf of the Friends – and literally thousands of happy guests - for all she has done towards making our Garden Parties so successful. The Garden Parties are the crowning event of the Friends' year, depending as they do on the generosity and goodwill of so many people. Nobody has contributed more than Jill has, for so long, and we are all so tremendously grateful to her."*



Don presented Jill with a gift, and Honorary Life Membership of the Friends.

**Pam Mawby then took the Chair**, saying she was happy and pleased to take on the challenge of being the fourth Friends' Chairman - and intended to ensure that the high standard set by the Committee and her predecessors was maintained. The meeting warmly applauded both outgoing and incoming Chairmen.

### **The Mayor – Cllr Christopher Carter**

The Mayor thanked the Friends for all their good work in Crescent Garden. It was appreciated and recognized, and he hoped the Council would be able to continue to maintain the support for the Trainee that they currently supply.

The Mayor congratulated Don on his Chairmanship and his dealings with GBC.

**David Wardle then gave a moving tribute**, to Don - and to his late wife, Betty.

“Don and Betty’s long association with the Friends stretched back to the Friends’ earliest days, when there was no Council Green Team, or Trainee Gardener, just a small but faithful band of volunteers, who between them brought the Garden into being.

‘Team Cripps’ undertook the maintenance of a section of the garden in the ornamental shrubbery, which enabled clearance and restoration work in other areas to be progressed more quickly.

When the annual fund-raising coffee morning was introduced they opened up their home in Western Way to host the event for the next ten years, until it moved to the Parish Centre. They were always ready to volunteer help, in so many ways: organising really special outings, or efficiently helping with food and drinks at the Garden Parties. It was a case of ‘Never fear, Team Cripps is here!’

Crescent Garden has had no firmer Friends. I believe that that ‘Best Small Park of the Year’ Gold Award owed much to the major part played by Don and Betty’s ‘Team Cripps’ over the many years of hard work that have led to the recent notable achievements.”

*Don was then presented with a case of his favourite Rioja wine, and a framed photograph of the Garden, as tokens of everyone’s deep appreciation of all that he and Betty had done for the Friends over the past 20 years.*

“Sadly, Betty is no longer with us, but we hope when you look at the picture and sip your wine it will bring back many happy memories.”

There was great applause. A wonderful tea rounded off the Meeting.

**Many Thanks and our appreciation** - go to the Alverstoke Conservation Group, for the loan of their PA system for our Meeting, and to Peter and Judy Newell for their help and advice.

Also to David Bone and Bill Rundle, for their expert and invaluable help. And lastly – to everyone concerned in producing that yummy tea!

### **Payment of Annual Membership Subscriptions**

The subscription payment year is from one February AGM to the next. Typically, between 25% to 30% of Friends are able to attend the AGM, so the rest of the Friends catch up later.

**If you could not come to the AGM this year, your Subscriptions, currently £4 per person, should now be paid!**

Please send/deliver to the Friends' Hon. Treasurer, David Wardle, at 2. St. Mary's Avenue, Gosport, Hants. PO12 3PY, Tel. 02392 582737. Cheques should be payable to "Friends of Crescent Garden".

**Queries about membership**, new members, and those wishing to check if their subscriptions are out of date should contact the **Membership Secretary**, Mrs V Whelan – her address: 1 Pembroke Crescent, Hill Head, Fareham, Hants, PO14 3PP.

T 01329 661849 or, email [gedandginny@fridaywhelan.plus.com](mailto:gedandginny@fridaywhelan.plus.com)

### **FINDERS KEEPERS?** By David Palmer

*(Another anecdote by our regular correspondent and Grand Chief of the Compost Bins)*

One Wednesday morning I was forking leaves in Compost Corner and came across the remains of a penknife. I say remains as its single blade was rusted beyond use. One side of the haft was missing but the other side was of a beautifully smooth wood, still sound despite its sojourn in the undergrowth. The knife was small, delicate to hold and, I guessed, Victorian. I imagined it fitting in a women's purse or a man's pocket. I thought of the owner's pain at discovering the loss. Did she or he return to the Garden in the hope of finding it?

Finding the penknife took my mind back a few years. My mother presented me with a jack knife. Do you recall these? A black knurled haft, a blade and can opener set within it and a spike attached to the spine, 'for removing stones from horses' hooves'. (My present knife has a bottle opener, a corkscrew and a toothpick, which indicates a change in lifestyle.) The spine had my name engraved on it. I was fully equipped for self-sufficiency in the wild. No Injun would survive me in hand-to-hand combat. Go find



me a horse with a stone in its hoof! I was only six but paradise had claimed me for its own.

Before the birthday party my mother sent me, my best friend Tarquin Gutbucket<sup>1</sup>, and another boy for a walk. As we returned my best friend asked to look at the knife, resting in the small of my back, well secured to a belt. I felt him fiddling, opening and closing the blades, I thought for rather a long time. As the party started the knife was to be displayed for general admiration. It was no longer attached to my belt. It had disappeared.

I was a rather dim child, certainly dimmer than Tarquin. Evidence that he had taken the knife was circumstantial but his having done so was consistent with other mean and spiteful acts he had committed during our short careers as 'best friends'. I don't know what happened to Tarquin. No doubt he prospered. If he ever had occasion to remove a stone I hope the horse had the presence of mind to land a kick and make a lasting impression.

A year ago, last Thursday I think it was, my wife and I were looking for butterflies on Danebury Hill, the iron age fort near Stockbridge. As we set off on the circular walk at the top of the fort hoping for Chalk Hill Blue, a boy of about 7 or 8 passed us with his mother and we were vaguely aware of him saying, "I think we went this way". We continued our tour, getting back to a same point about an hour later. Walking down the hill to the car park I spotted lying in the grass a brand new Swiss army knife. Do you recall it? A splendid red job with attachments capable of major surgery on a horse, let alone removing a stone from its hoof. Does the Swiss army dispense with rifles and launch into battle brandishing these splendid instruments?

Be that as it may, I went on my knees and claimed *my* new knife. This makes up for Tarquin Gutbucket! But as I stood up I knew it wouldn't do. My wife, who on occasions has helped clear the clouded waters of my conscience, agreed. My joy was quickly smothered by realizing the pain felt by some lad who had lost the knife.

We returned to the top guessing that the boy and his mother were searching. At least an hour had passed since we had seen them but we set off round the hill, my wife in one direction, I in the other. After half an hour I found them. The Swiss Army's newest recruit was reunited with his equipment.

The reunion was preceded by extraordinary coincidences. The knife had been lost the day *before*. We happened to hear the boy's remark in passing and more than an hour later, found the knife.

Had the experience laid the ghost of Tarquin Gutbucket maybe? After all these years, had it helped me grow up a bit? Perhaps...

*1 I was advised on legal grounds to disguise this name, but I resisted. Do your worst, Tarquin!*

**Hedgehogs in Crescent Garden?** Consideration is being given to introducing a small number of hedgehogs into Crescent Garden that have been abandoned, and currently reside in a refuge.

Before that can be allowed, a survey needs to be carried out to ascertain what mammals already exist in the adjoining area. If you live in the vicinity of Crescent Garden please would you please keep an eye out for any of the following: Hedgehog; Fox, Badger; Rabbit.

If you spot any of these - and any other of interest, e.g. slow worm; or would like to discuss this subject, please get in touch with David Palmer on 01329 665445 or email him at [sandpalmer@ntlworld.com](mailto:sandpalmer@ntlworld.com). Thank you!

### ***THE FRIENDS' COMING YEAR: 2012***

**Plant Sales: Saturday 19<sup>th</sup> May 10-12am & Sunday 20<sup>th</sup> 2-4pm May**

Buy - and Bring, for Bargains galore!

Could you help us sell plants? It would be great, as it's a popular event, and the first hour is always very busy. Please ring Rita if you could join us. (T 02392 587311)

All plants brought should be clearly labelled - some buyers and sellers may not have met them before!

Have plants, can't deliver, on the 19 May? Just let Rita Rundle know, and she'll make arrangements.

It would be a great help if you could let Rita know in advance if you're bringing a number, or large plants, so she can be sure of a storage place for them.

Last year many Friends brought a wide mix of highly desirable plants: it would be excellent if we could repeat the handsome donation we raised for the National Gardens Scheme Charities.

Our support - together with our essential high standard of maintenance - keeps Crescent Garden featured in the famous Yellow Book nationwide, bringing many visitors to see it.

**Chernobyl Children's Party** Sadly, no Party can be planned this year, as the children are unable to visit Gosport. We'll miss them!



Hopefully, there will be a chance to give our young friends a great party in 2013.

### *THE GARDEN PARTY*

**RITA'S SPECIAL REQUEST:** can you come to the aid of the Party??

'As you know, the Garden Party is our Big Event of the Year, a great opportunity for a community get-together, and for the neighbourhood to enjoy our beautiful Garden at its best.

It's the shared contributions that give the party its well-deserved reputation – which depends entirely on many volunteers' help with food, tentage, tables, Pimms, etc.

**On the Food Front** - at the AGM 25 people very kindly pledged platters of small eats, but we need 32 or more. **Might you be able to help? Could you let me know??**

**Garden Party Tents** - Peter Jaynes cannot be available to oversee the setting up and taking down of the tents this year - so we need somebody to lead the tentage team. Some Friends have already signed up as team members - but we need a few more of them, too!

We're also looking hopefully for someone with a trailer, who could collect the dismantled tents at the end and return them to their nearby storage.

None of these tasks are very time-consuming - but they make a big difference, on that Saturday in June.

**Any Friend happy to support us - please contact Rita Rundle or David. They'll be delighted to hear from you.**

### **Tickets for The Garden Party - Saturday 16<sup>th</sup> June 6-8pm**

Gill Comrie has agreed to sell the tickets again for us, from 10 Anglesey Arms Road, Gosport Hants PO12 2DGT. Tel. 02392-588316

Tickets will be available for the Party between Wednesday 9<sup>th</sup> May and Saturday 9<sup>th</sup> June. Applications for tickets may be forwarded earlier but will not be dispatched before 9<sup>th</sup> May – please mark your envelope GP.

#### Ticket prices

Adults (18 & over)	£9.25 (25p increase)
Aged 6 – 17yrs	£4.50 {Names will be on reverse of parents/guardians'
Aged 5yrs and under	free tickets}

Friends are reminded that parents and guardians are responsible for the safety of their children during the Garden Party and should be aware of where they are, and what they are doing. Last year it seems a number of children were playing in Crescent Road: not a good idea!

As always, each household may invite two adults as guests. Should they wish for more, they can identify other Friends who aren't bringing any, or can't come - and use their quota.

To help with ticket sales, please complete the application form (enclosed separately) - and post or deliver it to Gill with your payment, enclosing an S.A.E. not smaller than 220mm x 110mm which is ideal to accommodate the size/shape of the tickets.

**Payment for tickets: cheques only please, payable to "Friends of Crescent Garden" (if SAE is not provided, paid-for tickets can be collected from the entrance gate as you arrive.)**

It's a great help that Gill is happy to accept Friends' outstanding annual subscriptions for 2011-2012 - please include a separate cheque for this (*payable to "Friends of Crescent Garden"*) or cash (annual subscription is £4 per person).

Unsure about being up-to-date for subs? Gill can tell you, when you phone.

**To avoid disappointment, do obtain your tickets as soon as possible!**

### **2012 Heritage Open Days, 6<sup>th</sup> – 9th September**

Free tours of Crescent Garden will be on offer to visitors and we also welcome any Friends who may wonder what we get up to at these events - and might like to know more about the Garden and the Crescent? With a bit of luck you could glimpse a Regency lady or two (or even a gent!) There will also be stalls selling plants, cards, and jams in aid of Friends' funds.

Weather permitting, there are 3 tours each day, at 10am, 2pm & 4pm.

### **A September Visit: to Denman's Gardens and Parham House and Gardens, West Sussex**

Enid Billington is in the process of arranging an outing to Denman's Gardens and Parham House and Garden's, West Sussex. Currently the date for the outing is to be Thursday 20<sup>th</sup> September 2012. Cost £24.50 per person.

Depart 9am St Mary's Parish Centre, Alverstoke

Arriving back Alverstoke 5.30pm approx

Cost £24.50 inclusive all entrance charges.

**Denman's Gardens** This day trip is to John Brookes' acclaimed, world famous garden near Fontwell. John Brookes is a renowned international garden designer of over 1000 gardens, and has written widely on garden design and gardening. His 4-acre garden is broken into small areas, some walled; with flowers, herbs and foliage, it is famed for its colours and textures.



**Parham House & Garden** A private house built in the 16<sup>th</sup> C. Only 3 families lived there, before it fell into disrepair. Later it was restored, and administered by a Trust. Lady Emma Barnard is the present resident. The house is architecturally interesting, furnished in period style, and open to visitors. It is kept full of flowers, all grown in the garden.

Rudyard Kipling is said to have once lived in Parham House.

There are 7 acres of garden: 4 acres of organic walled garden. Herbaceous borders are Edwardian, and are designed for a long season of bloom and colour. Toilet and restaurant facilities are available at both venues.

It promises to be a lovely visit, to two beautiful and interesting places. If you'd like to come with us, please complete the separate form enclosed with this Newsletter and return with your cheque.

### *NOTICE BOARD: THINGS OF INTEREST*

#### **Advance Information on a important event**

Dr George Burrows, Senior Lecturer in Music, Portsmouth University and a Friend of Crescent Garden, writes regarding an event that Portsmouth University have planned in Gosport for the afternoon of Sunday 6 May, 2012 - which he thinks might be of interest to the Friends. (see details below).

It should be a wonderful occasion, promising a unique insight into one of Gosport's greatest cultural treasures, and George is offering the Friends a £2 discount (£5 discount for children) on the advertised ticket price for advanced booking. (All they need do is to mention "Friends of Crescent Garden" when they book tickets on the box office number below).

**A Gala Concert and Talk, celebrating the restoration of the unique Baroque organ in Gosport's Holy Trinity Church, on Sunday 6 May 2012, at 3-30pm.**

**Venue: Holy Trinity Church, Gosport**

**Tickets: £10 (includes a glass of wine!)**

**Box Office: 02392 843023 (ask to speak to Colin)**

For the past five years George has supported an initiative to raise funds to restore the unique Baroque pipe organ in Holy Trinity Church, Gosport. George has also supported the successful Heritage Lottery application to restore the organ, and has been asked to give a Concert on 6 May, to mark its restoration and return.

The event includes a talk by visiting American Professor Graydon Beeks of Pomona College, California, who will introduce choral music specifically written to incorporate this special instrument.

Baroque instrumentalists from the Netherlands will join the University of Portsmouth Chamber Singers in performing celebratory music by Handel and Pepusch.

**The organ was made in 1720** for the Duke of Chandos, who employed the composer Handel at his London palace.

The people of Gosport acquired the organ during the 1740's.

This international event marks the great significance of the instrument, both internationally and for the people of Gosport, and it is felt that many Friends could well be interested.

**Spithead Antiques and Fine Arts Society** SAFAS have organized a visit to London's V and A Museum on Thursday 10<sup>th</sup> May.

They have a few unsold seats, and are inviting any Friends who might like to go, to contact organizer Tricia Coombes, T02392 510847 **before April 30th**.

Cost is £18.20 pp. Dep.time 8.45am, from Landon Court bus stop Anglesey Rd or 9am from the Red Lion at Stubbington. Arriving home at 6.30 approximately.

More details can be had from Nell Rimington SAFAS Chairman, on 02392-510847.

**Good news!** Since the AGM, the Committee has welcomed a new recruit : Elaine Martin, who gave Gilly great assistance with the lovely slide show illustrating her talk. Elaine's talented work has long been appreciated at the Richard Martin Gallery, and we are very happy to have her on board.

**Found** An umbrella, after last year's Heritage Open Days in Crescent Garden. Yours? Contact the Secretary on 02392-582068.

**Gift to Friends** David Bone has very kindly donated a Twin Cutter Machine PC100-14 which can be used for cutting/shaping multi frame photographs, laminated sheets. Operating Instructions included! Thank you, David.

**Anyone interested in joining the Womens' Farm and Garden Association** (*You don't have to be female!*) - please don't hesitate to contact me - Gilly Jaynes, on 02392 422467 e-mail [gillyjis@hotmail.co.uk](mailto:gillyjis@hotmail.co.uk)

**From your Secretary: a reminder:** Anyone who feels they would like to say something, or who has a picture/photograph of the Garden to show us – please, get in touch!

The Friends' Committee is always open to suggestions and happy to answer any questions.

We really welcome your input and ideas, on any aspect of Crescent Garden or the Friends.



Finally, I'd like to thank all those who have contributed to this Newsletter, and provided ideas, information and help!

**David Merritt**

T 02392 582068 or e-mail [davidmerritt1@virginmedia.com](mailto:davidmerritt1@virginmedia.com)

### ***THE FRIENDS' COMING OF AGE, 2013***

After all the excitements of 2012, we'll have this special milestone of our own next year. Your Committee will be considering various ways to celebrate it.

One idea that has already been welcomed is to invite anyone who has an interesting anecdote concerned with Crescent Garden, a tale to tell, or thoughts to share, to write them down!

How do you feel about the happenings, struggles and developments over the last 21 years? Has Crescent Garden given you pleasure, or comfort, or fun - has it been a happy place for you? For your children, or your dogs? Do you enjoy being a Friend of this acre-sized plot??

We're not just fishing for compliments! Tell us how it is, what you really feel, or felt.

The community – everyone - is the mainspring here, and the community's benefit and pleasure is what motivates us - to dig and delve, creating and maintaining something that is always changing, for better or worse, every day. Bad weather, sunshine, vandals, weeds, poo-traps, outings, parties, friendship, cups of coffee, serenity and tranquility, bees, birds, many truly delightful dogs, toddlers learning to walk around the pool, green fly, the roses in June, icicles in Winter – what is Crescent Garden all about, for YOU?

Next year we really would like to have a special Coming of Age Spring Newsletter, **your** newsletter, holding a mirror up to this whole endeavour.

There's plenty of time; we thought we'd give lots of notice – but don't leave it too long, or you may forget something we really wouldn't want to miss.

More news about the Friends' coming-of-age in the Autumn Newsletter – meanwhile, ponder those thoughts and memories – and *write 'em down!*

WJO.



# THE DIAMOND JUBILEE PROJECT

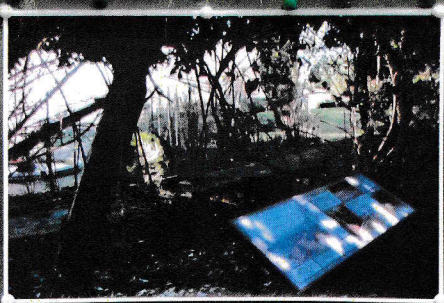
## THE WORK IN PROGRESS

Planting a special area of the Garden in celebration of HM Diamond Jubilee is a major project!

The 'special area' is the hitherto unresolved space between the central fountain area and Terrace Walk - see *Plan 1*.

It was decided at the outset that this special area should be essentially part of the overall design of Crescent Garden, and that carefully chosen plants would give it a distinctive character.

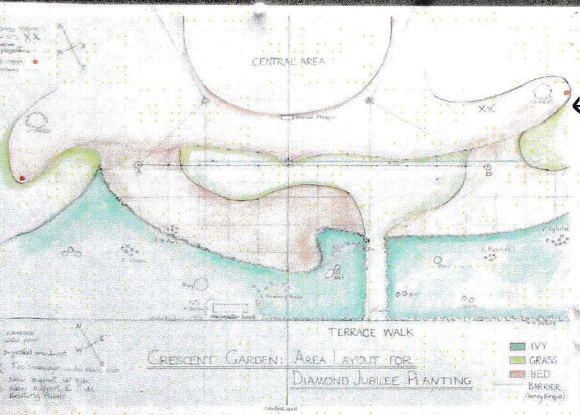
To avoid through-traffic, access would be only from Terrace Walk, and each end would be bounded by an iron plant support - matching the four existing pillars, but 3 feet taller, to support larger climbers.



### LOOKING FROM TERRACE WALK

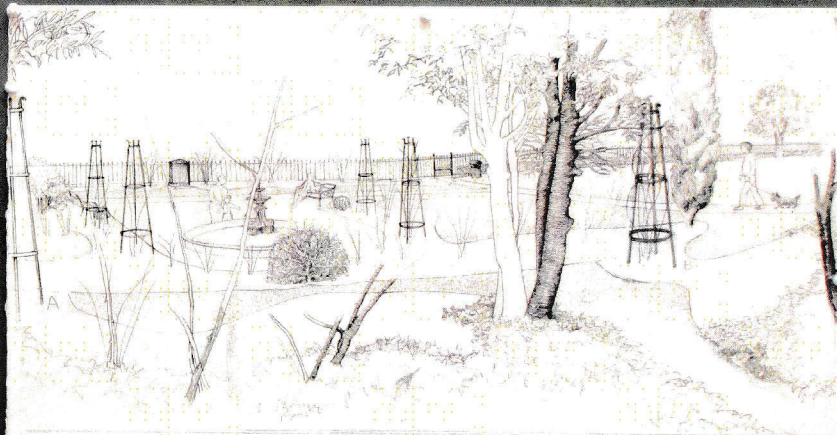
OBSCURED BY PLANTING, IT IS NOT EASY TO PERCEIVE THE NEW PLAN IN RELATION TO THE EXISTING CENTRAL DESIGN.

Clearing and cultivation of the new space has opened it out to sunlight and rain. It's also opened it visually from Terrace Walk.



Plan drawn to scale of the whole area, showing the site of the new pillars.

These are placed on a line parallel to the two pillars behind the fountain, but not equidistant from the centre, to balance the off-centre entry to the new space.



### THE DRAWING

Amended as work progressed, this concentrates on the underpinning design and layout of Crescent Garden, viewed across the central area from Terrace walk.

Stripped of most of the planting, it is little more than a kind of vertical ground plan. But it gives some idea of the human scale, and is a helpful tool when considering the overall unity of the completed design.

